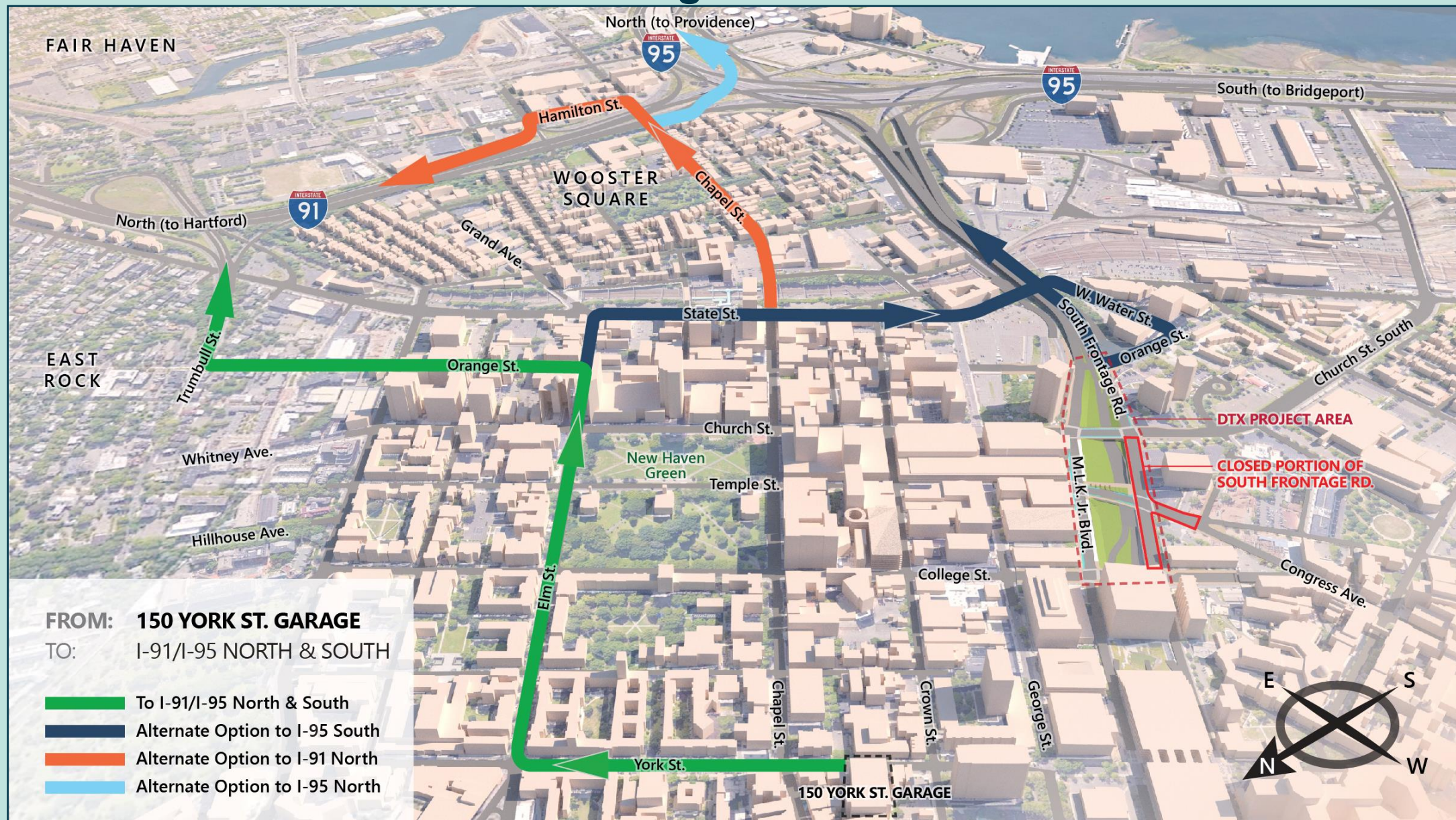


# Navigating the South Frontage Road Closure: 150 York Street Garage to Interstates 91 and 95



## For exits from 150 York Street Garage to I-91/95 North & South:

1. Exit left onto York Street.
2. Turn right onto Elm Street.
3. Turn left onto Orange Street.
4. Turn right onto Trumbull Street.
5. Continue straight and follow signs to Interstate (91 or 95).

## For exits from 150 York Street Garage to I-95 South:

1. Exit left onto York Street.
2. Turn right onto Elm Street.
3. Turn right onto State Street.
4. Continue onto Union Avenue.
5. Turn right onto West Water Street.
6. Turn right onto Orange Street.
7. Turn left onto South Frontage Road.
6. Continue straight and follow signs to Interstate 95 South.

## For exits from 150 York Street Garage to I-91 North:

1. Exit left onto York Street.
2. Turn right onto Elm Street.
3. Turn right onto State Street.
4. Turn left onto Chapel Street.
5. Turn left onto Hamilton Street.
6. Turn left to Interstate 91 North.

## For exits from 150 York Street Garage to I-95 North:

1. Exit left onto York Street.
2. Turn right onto Elm Street.
3. Turn right onto State Street.
4. Turn left onto Chapel Street.
5. Turn right onto Franklin Street.
6. Turn left onto Interstate 95 North.

## COMMUTER ALERT!

### South Frontage Road to be Closed between College & Church Streets from June 1- November 2021

#### Frequently Asked Questions

##### Why is South Frontage Road between College and Church Streets closing from June until November 2021?

This portion of South Frontage Road is being closed to accommodate Downtown Crossing Phase 3 construction, which is preparing the area for a future bridge that will reconnect Temple Street to Congress Avenue. The South Frontage Road closure is needed to safely raise the height of the road, by approximately eight feet, to meet the grade of the future bridge.

When completed, the bridge connecting Temple Street to Congress Avenue will reconnect Downtown New Haven and the medical district to the Hill neighborhood for pedestrians, bicyclists, and slower speed motor vehicle traffic.

The portion of South Frontage Road between College and Church Streets will be closed from June 1, 2021 until November 2021.

##### How will I get around?

An official detour route has been established for drivers. Street signs will guide drivers through the route.

##### What are alternate routes?

Alternate routes have been developed to provide commuters additional options, outside of the signed detour route, to access Interstate 91 and Interstate 95. There are many routes to and from Downtown New Haven and the medical district that are underutilized and may provide efficient alternatives to commuters—even outside of Downtown Crossing Phase 3 construction!

##### How were the alternate routes developed?

The Downtown Crossing team selected over 15 large parking garages and parking lots that serve thousands of vehicles in the construction area. The team then developed alternate routes from these parking locations to provide commuters with travel options that may reduce travel delays. The alternate routes, along with the official, signed detour route(s), are designed to alleviate traffic congestion and commuter delays during the South Frontage Road closure for Downtown Crossing Phase 3 construction.

##### How can I stay informed on the latest construction impacts?

Sign up for Downtown Crossing e-newsletter to receive advanced notice of traffic impacts due to the construction at [DowntownCrossingNewHaven.com/Stay-Informed](https://DowntownCrossingNewHaven.com/Stay-Informed).

##### How can I ask a question or leave a comment about the Downtown Crossing project?

Questions and comments can be submitted through the Downtown Crossing New Haven website, available at any time, at [DowntownCrossingNewHaven.com/Stay-Informed](https://DowntownCrossingNewHaven.com/Stay-Informed) (scroll down the page for the comment form).

##### What is Downtown Crossing New Haven?

Downtown Crossing New Haven is an infrastructure project that is transforming the Route 34 former 'highway to nowhere' into urban boulevards, reconnecting city streets with bicycle and pedestrian infrastructure, and freeing prime land (formerly unusable due to the highway's right of way) for economic development. Visit [DowntownCrossingNewHaven.com](https://DowntownCrossingNewHaven.com) to learn more.

Road signage will alert drivers and pedestrians to work areas and lane closures.

Please pay attention to this signage, slow down, and stay safe!

Community in Progress,  
Thank You for Your Patience.

# Downtown | Crossing

New Haven

